

# Endoca

## Certificate of Analysis

### CBD CHEWING GUM 150MG CBD

Endoca BV  
 Siriusdreef 17 2132 WT Hoofddorp EU  
 Phone: +31-238-080-104  
 info@endoca.com  
 www.endoca.com  
 ISO 22000 certified  
 HACCP certified; GMP certified

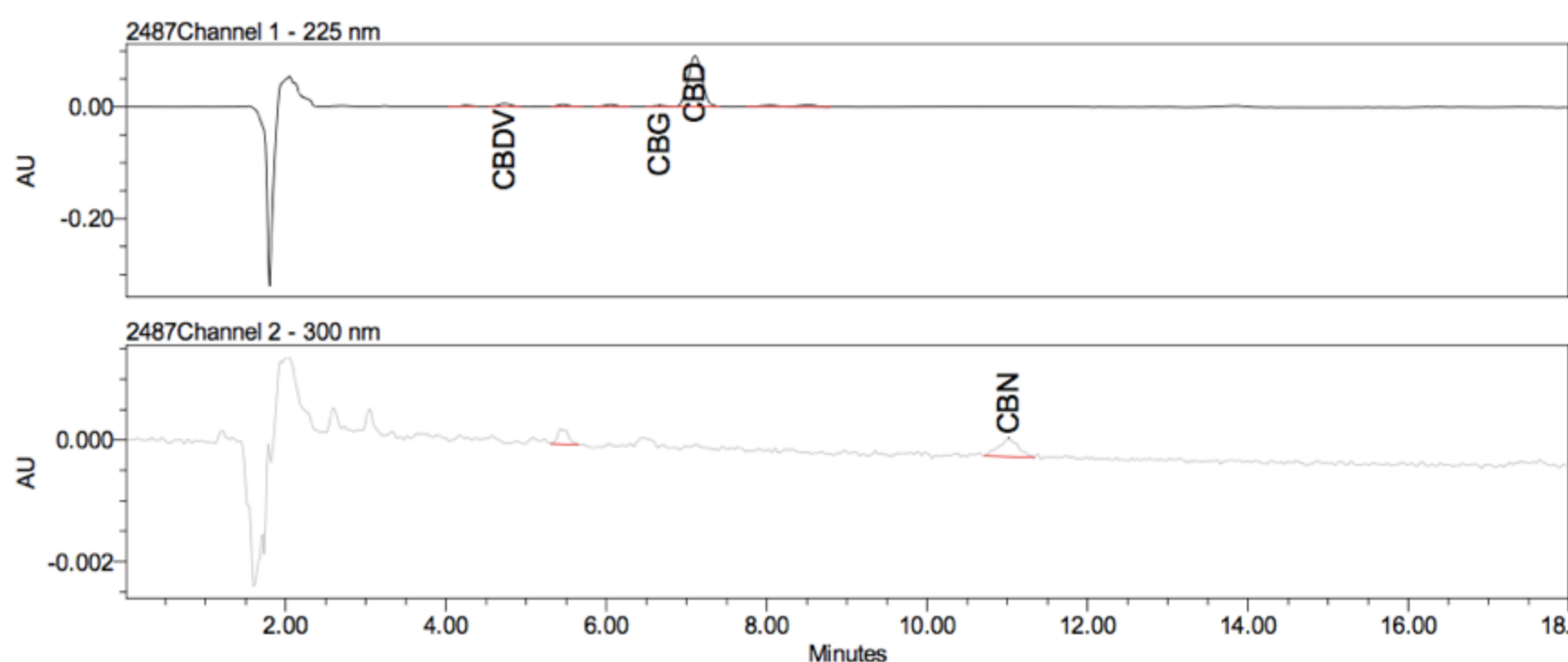
Responsible Supervisor:	Martin V.
Sample	Batch# 68G
Date samples received:	01-February 2020
Date analysis began:	01-February 2020
Date sample report produced:	06-February 2020
ID Number when available:	
Sample Mass	1 g

### Cannabinoid Profile

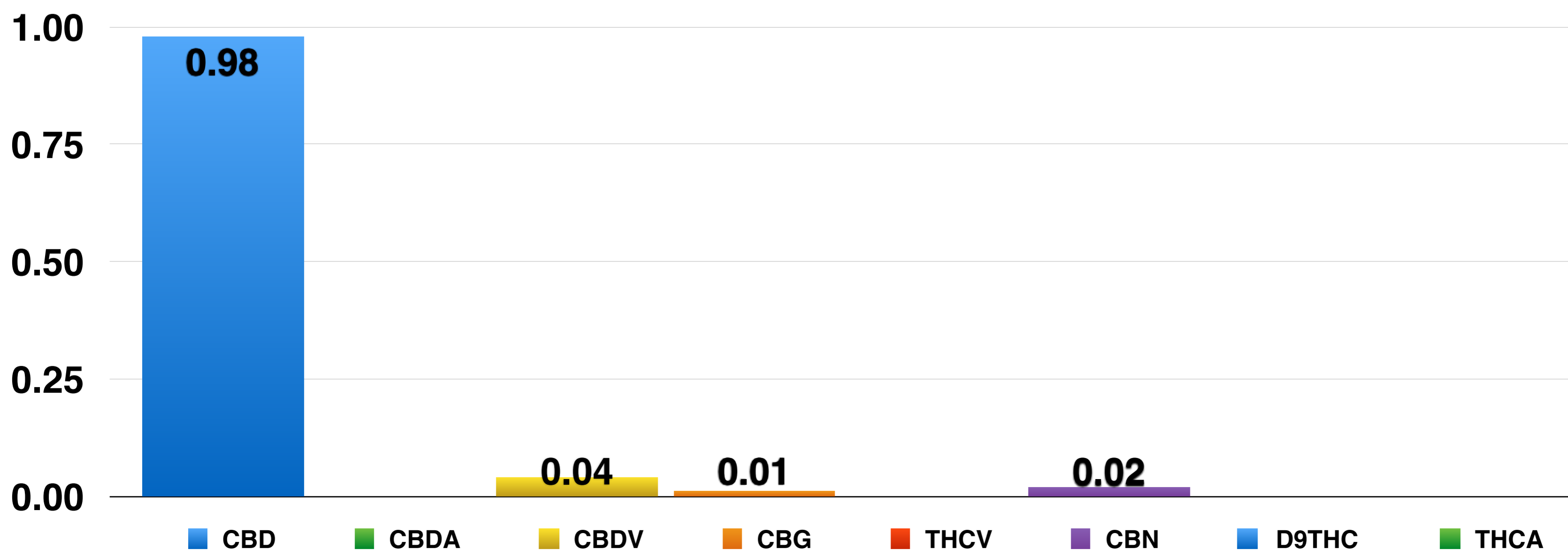
Component	Mass (%)	Amount (mg/g)
CBD	0.98	9.80
CBDA	ND	ND
CBDV	0.04	0.40
CBG	0.01	0.10
THCV	ND	ND
CBN	0.02	0.20
D9THC	<LOD	<LOD
THCA	<LOD	<LOD

N.D. - Not detected, LOD-Limit of Detection (LOD=0.001%)

### HPLC Chromatograph Raw Data



### Cannabinoids as Percent of Total Mass



# Endoca

## Certificate of Analysis

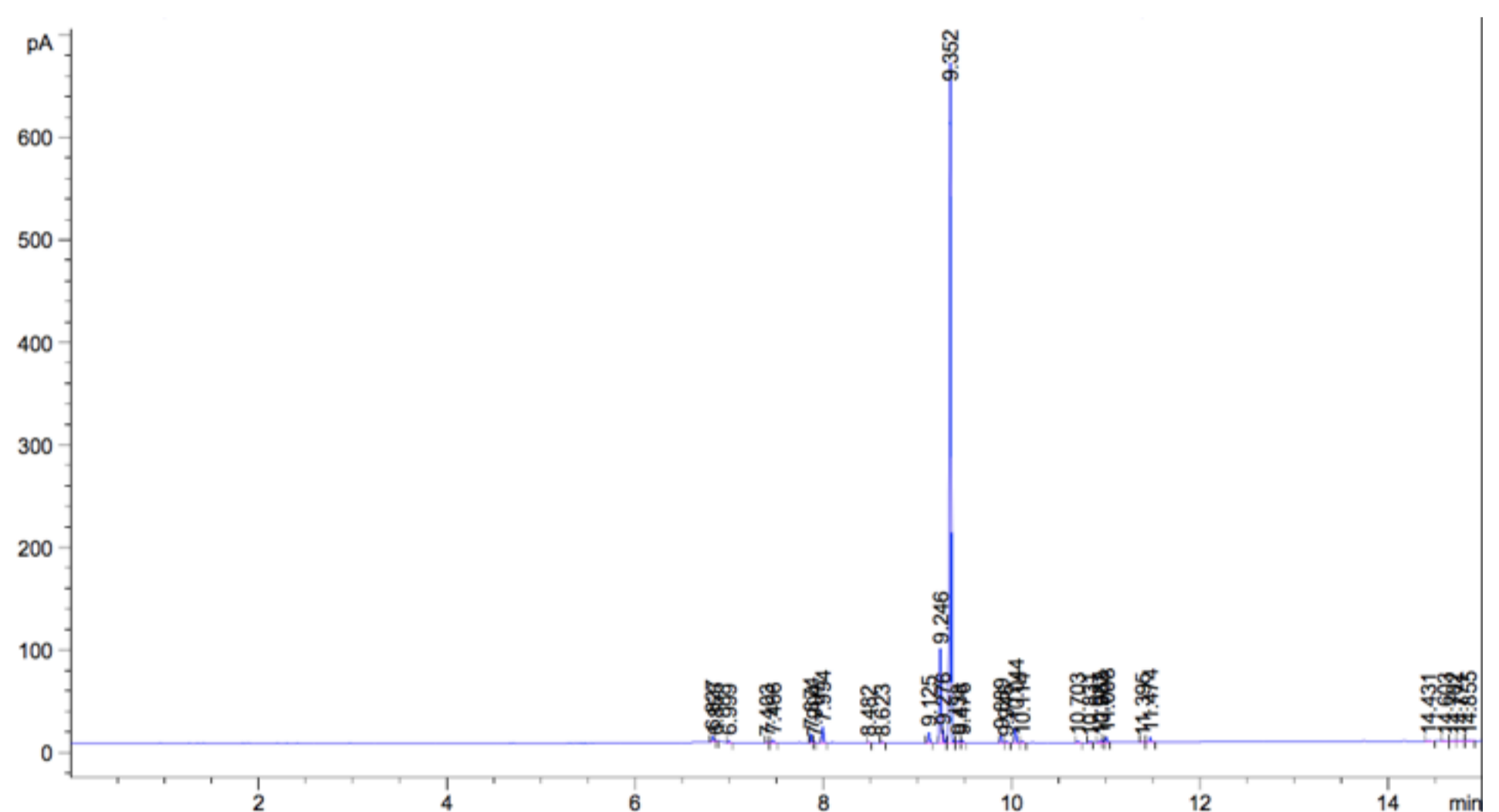
### CBD CHEWING GUM 150MG CBD

Endoca BV  
 Siriusdreef 17 2132 WT Hoofddorp EU  
 Phone: +31-238-080-104  
 info@endoca.com  
 www.endoca.com  
 ISO 22000 certified  
 HACCP certified; GMP certified

Responsible Supervisor:	Martin V.
Sample	Batch# 68G
Date samples received:	01-February 2020
Date analysis began:	01-February 2020
Date sample report produced:	06-February 2020
ID Number when available:	
Sample Mass	1 g

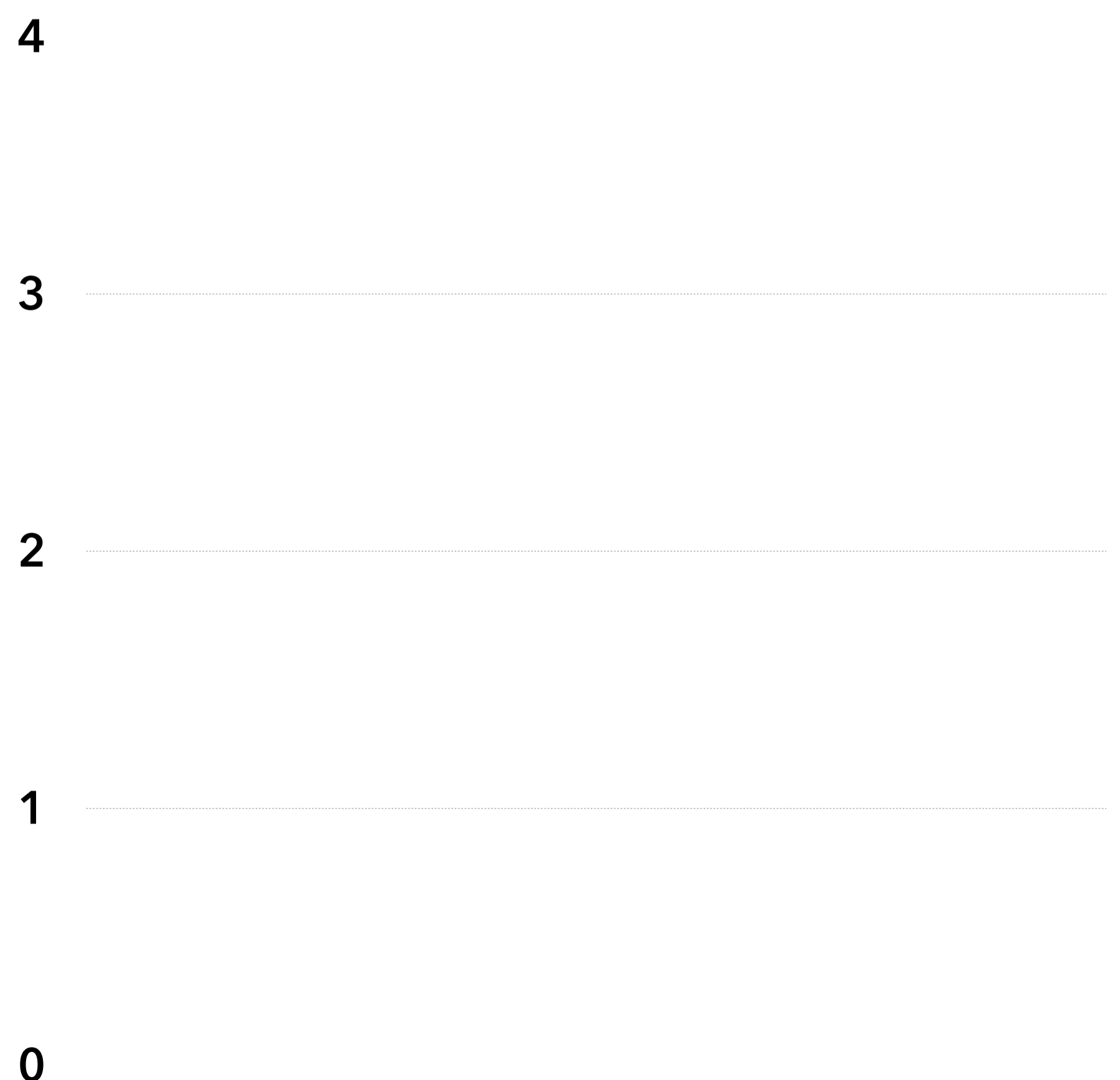
### Terpenoid Profile:

Component	Amount %
$\beta$ -Caryophyllene	<0.01
$\alpha$ -Humulene	<0.01
Caryophyllene oxide	<0.01
Myrcene	<0.01
$\alpha$ -Pinene	<0.01
Terpinolene	<0.01
Humulene epoxide II	<0.01
Limonene	<0.01
$\beta$ -Pinene	<0.01
E- $\beta$ -Ocimene	<0.01
Sabinene	<0.01
Linalool	<0.01



### Terpenoid Distribution

- $\beta$ -Caryophyllene
- $\alpha$ -Humulene
- Caryophyllene oxide
- Myrcene
- $\alpha$ -Pinene
- Terpinolene
- Humulene epoxide II
- Limonene
- $\beta$ -Pinene
- E- $\beta$ -Ocimene
- Sabinene
- Linalool



# Endoca

## Certificate of Analysis

### CBD CHEWING GUM 150MG CBD

Endoca BV  
 Siriusdreef 17 2132 WT Hoofddorp EU  
 Phone: +31-238-080-104  
 info@endoca.com  
 www.endoca.com  
 ISO 22000 certified  
 HACCP certified; GMP certified

Responsible Supervisor:	Martin V.
Sample	Batch# 68G
Date samples received:	01-February 2020
Date analysis began:	01-February 2020
Date sample report produced:	06-February 2020
ID Number when available:	
Sample Mass	1 g

### Microbial Profile:

Component	Mass (%)	Amount (mg/g)
<i>Candida albicans</i>	1 g	Not Detected
<i>Escherichia coli</i>	1 g	Not Detected
<i>Pseudomonas</i>	1 g	Not Detected
Staphylococcus	1 g	Not Detected
Yeast	CFU	<1 x 10 <sup>1</sup>
Mould	CFU	<1 x 10 <sup>1</sup>

### All Mycotoxins at Non Detectable (ND) levels



### Conclusions:

All microbial residues including Listeria, Monocytogenes, E-Coli, Fungi, Salmonella and Molds are all below detectable thresholds

# Endoca

## Certificate of Analysis

### CBD CHEWING GUM 150MG CBD

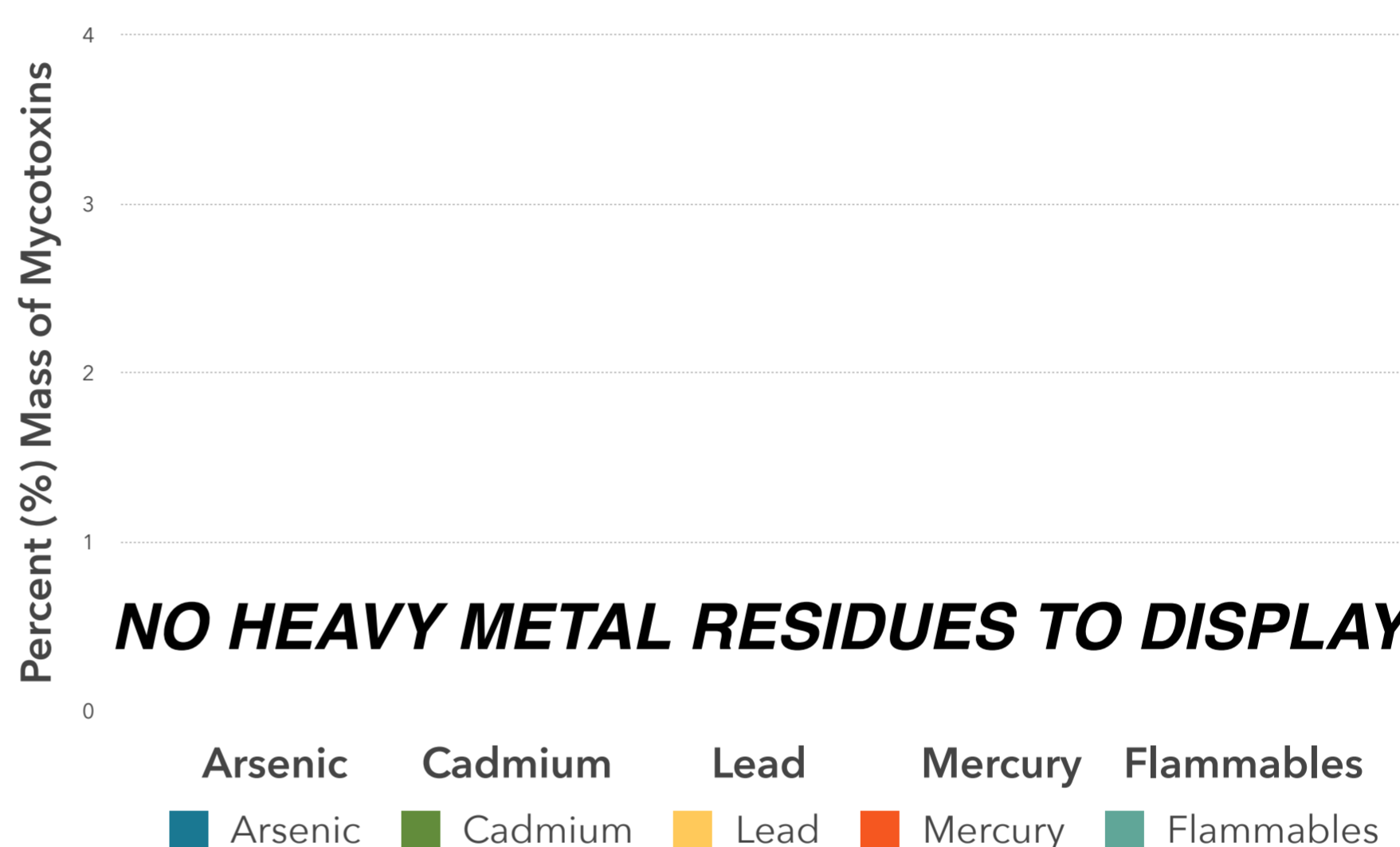
Endoca BV  
 Siriusdreef 17 2132 WT Hoofddorp EU  
 Phone: +31-238-080-104  
 info@endoca.com  
 www.endoca.com  
 ISO 22000 certified  
 HACCP certified; GMP certified

Responsible Supervisor: Martin V.  
 Sample: Batch# 68G  
 Date samples received: 01-February 2020  
 Date analysis began: 01-February 2020  
 Date sample report produced: 06-February 2020  
 ID Number when available: \_\_\_\_\_  
 Sample Mass: 1 g

### Heavy Metals Profile:

Component	Mass (%)	Amount (mg/g)	Limit
Arsenic	< 0.01	ND	ND
Cadmium	< 0.01	ND	ND
Lead	< 0.01	ND	ND
Mercury	< 0.01	ND	ND
Flammables	< 0.01	ND	ND

### All Heavy Metals at Non Detectable (ND) levels



### Conclusions:

No heavy metal residues detected.

No flammable residues detected.

No chemical residues detected.